

PITTSBURGH SHAKESPEARE IN THE PARKS

16TH SEASON



CYMBELINE

SHAKESPEARE'S FAIRY TALE

DIRECTED BY JEFFREY CHIPS

September 4-25, 2020

LIVE performances Fridays at 7pm

Streaming on YouTube

Available for viewing through the following Friday until 8pm

Full production online until October 2

Subscribe to **PSIP's YouTube Channel** to follow the production.

Visit www.pittsburghshakespeare.com for more details.

9/4 at 7pm - Cymbeline Part I: Love and Falsehood

Followed by Opening Night Toast with Company

9/11 at 7pm - Cymbeline Part II: Betrayal and Conspiracy

Followed by Director's Forum with Jeffrey Chips

9/18 at 7pm - Cymbeline Part III: Bloodshed and Grace

Followed by Sonnet-a-thon with Jennifer Tober

Bring your favorite sonnet or two to read!

9/25 at 7pm - Cymbeline Full Show

Followed by Closing Night Celebration with Company

Have your beverage and snacks ready!

Remember that we can't pass the basket in person, so
your online donations

support our digital productions and every artist involved.

SPONSORED BY



WELCOME FROM THE FOUNDING ARTISTIC DIRECTOR

We are so pleased to bring you CYMBELINE online this year — our “Sweet 16th” season of free Shakespeare! Because of COVID-19 we have had to modify our format to safely entertain you from our homes instead of from our beautiful city parks.

Forced inside, we have also been forced to be newly creative in ways we’d never imagined before —creating mini “sets” in our living quarters, acting on Zoom, using our phones and laptops to record dances, battle scenes, and songs. We have been stretched and have grown as performers and designers. Most of all, we’ve had a blast rehearsing, learning, experimenting, and creating, and we are delighted to take you, the audience, on this journey with us.

CYMBELINE is a fairy tale of family dysfunction full of intrigue, jealousy, revenge, mistaken identities, perseverance, and, in the end, love. Because it reads like a soap opera, we’ve decided to bring the play to you in an episodic fashion. Tune in each Friday night at 7 pm for a new episode, and then tune in Friday, September 25th for the entire show.

We look forward to the time when we can again gather safely in our parks. Until then, grab your loved ones, a beverage, some popcorn, and tune in to share in our CYMBELINE Family adventures!

—Jennifer Tober, AEA, SAG-AFTRA
Artistic Director, Pittsburgh Shakespeare in the Parks

THE BOARD OF PITTSBURGH SHAKESPEARE IN THE PARKS

OFFICERS

Jennifer Tober, President and Artistic Director
Catherine Aceto, Vice President
Jonathan Poli, Secretary
Mimi Wilson, Treasurer

DIRECTORS

Lynette Asson
Erika Fricke
Yvonne Hudson
Alan Irvine
Tonya Lynn

PSIP has a working board. We are actors, teachers, scholars, fundraisers, and fans. We are growing the board, seeking hard-working, forward-thinking individuals who want to be part of bringing accessible, high-quality, free Shakespeare to our neighbors in our Pittsburgh parks. Interested applicants can submit resume and cover letter or send inquiries to info@pittsburghshakespeare.com.

PITTSBURGH SHAKESPEARE IN THE PARKS’ MISSION

To bring accessible, high-quality, free Shakespeare to Pittsburgh citizens, and to encourage the enjoyment and preservation of our natural public places and parks.

BE SOCIAL WITH US!

Watch us on YouTube: Pittsburgh Shakespeare in the Parks
Like us at Facebook.com/pittsburghshakespeare
Share us on Instagram: @pghshakespeareparks
Follow us on Twitter: @pghshakespeare
Show your pride at Cafepress.com/pghshakespeareshop

WE COUNT ON YOUR SUPPORT!

Donate now at www.pittsburghshakespeare.com

Please contact 412.404.8531 or info@pittsburghshakespeare.com
or mail your donation to: P.O. Box 81775, Pittsburgh PA 15217

PSIP is a 501(c)(3) non-profit. All donations are tax deductible.

BRITSBURGH



A FESTIVAL OF BRITAIN
IN PITTSBURGH

PSIP is a proud BRITSBURGH partner. The September 11th performance is part of the 2020 Britsburgh Festival.

Britsburgh’s vibrant societies offer events and comraderie around things we love:

Arts, Beer, Literature, History and, of course, Tea!

Explore all the possibilities at
Britsburgh.com

PSIP
Pittsburgh
Shakespeare
in the Parks

PITTSBURGH SHAKESPEARE IN THE PARKS

P R E S E N T S

CYMBELINE BY WILLIAM SHAKESPEARE

DIRECTED BY JEFFREY CHIPS

THE CAST

IMOGEN

CYMBELINE / JUPITER

POSTHUMUS LEONATUS

IACHIMO / CORNELIUS

CLOTEN / CAIUS LUCIUS

QUEEN / BELARIUS / MOTHER LEONATUS

PISANIO / PHILARIO / SICILIUS LEONATUS

GUIDERIUS / FIRST LORD

ARVIRAGUS / SECOND LORD

* Member of Actors' Equity Association, the Union of Professional Actors and Stage Managers, appearing under a special agreement with Actors' Equity Association.

Jennifer Tober*

Ronald H. Siebert*

Irene Alby

Catherine Baird

Bob Colbert

Tracey D. Turner

Aaron Crutchfield

Kelsey Robinson

Christine McGrath

Run Time: Each is runs up to 45 minutes.

The full show runs up to 100 min with no intermission.

ARTISTIC

Artistic Director

Stage Director

Assistant Director / Fight Director / Puppeteer

Production Designer

Production Manager

Dance / Music Captains

Stage Manager

Videographer

Live-stream Technician

Engineer and Producer of 'Arise' Underscore
of Dream Sequence

Jennifer Tober

Jeffrey Chips

Tonya Lynn

Lisa Leibering

Alan Irvine

Emily Gallagher

Christine McGrath

Kelsey Robinson

Emily Gallagher

Ryan Bergman

Joseph Sandler

Simon Howard

Print.
Pittsburgh's East End Newspaper

The original handheld device
www.eastendprint.com

**PROUD MEDIA SPONSOR OF
PITTSBURGH SHAKESPEARE IN THE PARKS**

**East end's award winning weekly,
Only \$25 a year.
412-748-1900**

A MESSAGE FROM THE DIRECTOR

Welcome to our virtual park in one of the strangest years of our lifetimes. We had such grand plans for an outdoor production that would rise and meet the opportunities provided to put on such an epic play. Of course, circumstances forced us to change our plans, then change them again, then change them again, and here we are in this surreal setting presenting Shakespeare's most surreal play. We couldn't be happier.

Cymbeline was written between the years of 1608 and 1610 and is one of the last plays Shakespeare wrote by himself. In terms of genre, it's equal parts comedy, tragedy, and history, and scholars often place it alongside *The Winter's Tale*, *Pericles*, and *The Tempest* as romance plays. Each of these plays borrow familiar elements from earlier plays, but show an author at the height of his talents breaking all the rules and digging deep into the core of what it means to be human and laying it bare and vulnerable for the whole world to see.

While I spent more than a year preparing for this production, I discovered a play that asks a lot of uncomfortable questions without providing satisfying answers. Perhaps that's one way to define what the year 2020 has been for all of us. The world of *Cymbeline* is a dark and troublesome one with clearly defined social structures, a hierarchy of gender, of class, and a deep suspicion and mistrust of anyone outside of one's group. We see an unbridled sense of jingoism and a thirst for war, regardless of the cause or the cost. Our characters navigate this world, constantly pushing against these structures and finding no clear distinction between right and wrong. Their survival is dependent upon making morally ambiguous choices.

While these themes and ideas pique my interest, and I certainly have worked to build a production around them, I also found myself feeling overwhelmed by current events – the Coronavirus pandemic; the economic crisis; the murders of George Floyd, Ahmaud Arbery, Breonna Taylor, and others; the stark realities of climate change; and not least of which, a divisive presidential election with high stakes and huge consequences.

I'm reminded that in the face of so much division and uncertainty, the best I can do to ease the pain of others and try to fix what's broken is to bring communities together and tell stories, preferably in a park with the words of Mr. Shakespeare.

For 16 years, Pittsburgh Shakespeare in the Parks has provided that oasis of community, familiarity, and joy, and I have had the extraordinary fortune of playing a small role in its storied history. While we can't gather *en masse* in Pittsburgh's beautiful parks this year, we can still gather online and share what we love with all of you.

More than anything, I hope this production brings you peace, joy, love, laughter, community, and the same overwhelming feeling of gratitude that this entire process has given me.

—Jeffrey Chips, Director

THE STORY

Explore the play, characters, and Shakespeare in our Education Guide for all ages at: http://tiny.cc/Cym_KG

PART I: LOVE AND FALSEHOOD

In the court of the British King Cymbeline, a clandestine wedding sends shockwaves through the whole kingdom. Imogen, the king's only surviving child and heir to the British throne, has married the king's servant Posthumus in secret, spurning her father's wishes for her to marry Cloten, the son of the Queen – Cymbeline's wife and Imogen's stepmother.

In his anger, Cymbeline banishes Posthumus from Britain and confines Imogen to the court. Posthumus travels to Rome where he meets the Italian soldier Iachimo. They engage in a wager to see if Posthumus' new bride is as faithful as he claims she is. Iachimo travels to Britain and tries to seduce Imogen to no avail, but manages to sneak into her bed chamber inside a trunk and steal the bracelet given to her by Posthumus. Cloten tries in vain to win Imogen's heart.

There are rumors of tension between Britain and Rome. Iachimo reports back to Posthumus that he and Imogen have enjoyed one another and that she is, indeed, unfaithful.

PART II: BETRAYAL AND CONSPIRACY

The Roman ambassador Caius Lucius arrives to the British court with a message from Emperor Augustus. Many years ago, Julius Caesar and Cassibelan, Cymbeline's uncle, formed an agreement that Britain would pay Rome an annual tribute. This has gone unpaid for many years, and Augustus has declared an ultimatum – repay the tribute or go to war. Cymbeline chooses war.

Meanwhile, Pisanio, Posthumus' servant and friend, sworn to protect Imogen in Posthumus' absence, receives a letter from his master saying that Imogen has been unfaithful and that Pisanio is to murder her. Imogen, unaware of any of this, has also received a

letter from Posthumus asking that she meet him at Milford Haven. She and Pisanio hatch a plan to escape the British court and travel many miles to Milford Haven. Meanwhile in Cambria, we meet Belarius and his two sons, Guiderius and Arviragus, who reside in the mountains and live off the land. All seems well with their peaceful existence, but Belarius harbors some deep secrets. He was once a decorated soldier in Cymbeline's army who fell out of the king's favor.

In an act of revenge, Belarius kidnapped the king's two sons, fled to the mountains, and has raised them as his own for 20 years. Imogen and Pisanio arrive at Milford Haven, and Pisanio informs her of Posthumus' wishes. They devise a plan that she will disguise herself as a boy called Fidele, wait for Caius Lucius to pass through Milford Haven on his way back to Rome, and enlist herself in his services. Pisanio presents her with a box of medicine given to him by the Queen in case she ever falls ill.

Imogen, now disguised, searches for food and shelter and finds an inhabited cave. Belarius, Guiderius, and Arviragus return from hunting and find Imogen in their dwelling. They invite her to stay and treat her as one of their own. Meanwhile, Cymbeline is unwavering in his desire to go to war. Cloten learns of Imogen's escape and employs Pisanio in a plan to disguise himself as Posthumus and bring her back. Cloten travels to Milford Haven and finds Belarius, Guiderius, Arviragus, and Imogen. Belarius recognizes Cloten as the Queen's son, but Guiderius engages and kills Cloten, cutting off his head. Imogen has fallen ill and takes the Queen's medicine. Arviragus finds her in the cave and believes her to be dead. They lay her body next to Cloten's headless body and leave.

Imogen awakes next to a headless body in her husband's clothes and believes that Posthumus has died. Caius Lucius finds her weeping over the body and enlists her in his service.

PART III: BLOODSHED AND GRACE

As he prepares for war, Cymbeline learns that his wife has fallen ill and Imogen and Cloten have gone missing. Belarius, Guiderius, and Arviragus hear the drums of war approaching. Belarius wishes to flee to the mountains, but Guiderius and Arviragus insist on fighting. Belarius consents, and the three join the British forces.

Posthumus has joined the Roman army but is racked with guilt over ordering Pisanio to kill Imogen. He throws off his Roman uniform and decides to fight for Britain. A great battle ensues with Iachimo and Caius Lucius commanding the Roman army with Imogen, disguised as Fidele, serving as Caius Lucius' page.

In the fight, Posthumus overtakes Iachimo but spares his life. Cymbeline is captured, but Belarius, Guiderius, and Arviragus join the fight, assisted by Posthumus, and win the battle for the British. After the battle, Posthumus is taken prisoner by British soldiers, believing him to be Roman, and sentence him to death. In prison, he is visited in a dream by the ghosts of his father and mother, who tell him he is noble and worthy of Imogen's hand.

Jupiter descends from the heavens and blesses his marriage to Imogen. Posthumus awakes, and instead of being executed, is ordered to stand before the king. In the British court, Cymbeline honors Belarius, Guiderius, and Arviragus for their valour in battle. He is abruptly interrupted to learn that the Queen has died and has confessed that she never loved Cymbeline and had been plotting to kill him and take over the kingdom. Caius Lucius, now a prisoner, asks Cymbeline to grant clemency to Fidele. Belarius, Guiderius, and Arviragus see Imogen (Fidele) alive and rejoice. Iachimo, also a prisoner, admits to concocting the story of Imogen's infidelity.

In a fit of rage, Posthumus attacks the young page called Fidele and quickly discovers she is Imogen, whom he believed to be dead. Pisanio explains his role in conspiring to keep Imogen alive, but admits he does not know of Cloten's fate. Guiderius admits to murdering Cloten, and Cymbeline has him arrested and sentenced to death. Belarius intervenes and reveals that Guiderius and Arviragus are, in fact, Cymbeline's sons, whom he believed to have been dead for 20 years.

Posthumus and Imogen are reunited. Posthumus forgives Iachimo. Cymbeline pardons all wrongs, promises to repay the tribute to Rome, and rejoices in the reunion of his family.



streaming live at wesa.fm and wyep.org





Lightly scented handmade
vegetarian & vegan soap.

We donate 1 bar for every
2 items we sell
to a regional domestic
violence charity.

Save 25% off your online
order using coupon code
"getmoresoapylove"
or

Buy 4 and get 1 free
when you shop in person
at the storefront!



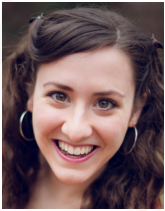
134 East 8th Ave
Homestead, PA 15120

www.pipandlola.com

THE COMPANY



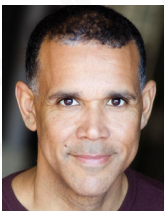
Irene Alby (POSTHUMUS LEONATUS) is thrilled to work with PSIP again after performing the title role in *Julius Caesar* last summer. A director/actor, Irene worked with the award-winning The Other Theatre in Montreal. New York credits include Andrei Serban's *Peer Gynt* and his *Benvenuto Cellini* (NY Metropolitan Opera); *The Dancing Fox* (The Mettawee River Theatre) as well as performances at the Ohio Theatre Ice Factory Theatre Festival, the Producer's Club, and St. Veronica's Church. She is a Teaching Assistant Professor at the WVU School of Theatre and Dance. A founding artist of the Glaciy Theatre Collective she directed *God's Ear* and performed as Titania/Hyppolyta in *A Midsummer Night's Mysteries*, a collaboration with the Toledo Symphony Orchestra. For West Virginia Public Theatre she directed *A Christmas Carol* in 2016 and 2017.



Catherine Baird (IACHIMO / CORNELIUS) has most recently toured with *Jump with Jill*, the world's only rock 'n roll nutrition show, which is based out of Pittsburgh and tours to elementary schools around the country. In Pittsburgh, Catherine has performed with The New Renaissance Theatre Company's Unrehearsed Shakespeare Project (*The Two Gentlemen of Verona* and *Othello*), The Pittsburgh New Works Festival, and The Dinner Detective; other regional credits include: PlayMakers Repertory Company, Hangar Theatre, and Broadway Series South. She holds her BA from UNC-Chapel Hill in Dramatic Art and Public Health. Many thanks to PSIP, Jennifer, and Jeff for this unique opportunity to play such a fascinating character in a brand-new theatrical medium!



Bob Colbert (CLOTEN / CAIUS LUCIUS) is a 2016 graduate from Messiah College with a BFA in Musical Theater. With PSIP, Bob has previously appeared in *Henry V* as Fluellen and the French King, and in *The Two Gentlemen of Verona* as Speed. Bob has also performed with such Pittsburgh theater companies as Poor Yorick's Players, Steel City Shakespeare Center, and Gemini Children's Theater. In addition to Gemini's mainstage productions, Bob is also involved in their school outreach program. Enjoy the show!



Aaron Crutchfield (PISANIO / PHILARIO / SICILIUS LEONATUS) has years of experience in scripted theater and decades of improv performance; work on and off camera in films, TV, training videos, and voice over. Aaron's artistic skills have traveled from SCIT to the Arcade, and to work with the Cultural Trust where Aaron loved the Supernatural Shakespeare project that first welcomed him into PSIP! He's super happy to return in a jam with this company. Aaron says: Big hugs to my sons Dylan and Jordan developing as athletes and people this summer, and always love to my super wife Katrina! And big hugs to all as we try to master evolving digital communication!! And, let's share and maintain the planet for all kids. Climate, social justice, and education are all issues we all need to keep working on.



Christine McGrath (ARVIRAGUS / SECOND LORD) is ecstatic to be a part of PSIP's production of *Cymbeline* and is so grateful for the opportunity to act, compose, and choreograph alongside some incredible artists. She is a Pittsburgh native and graduate of Allegheny College- GO GATORS! She has recently performed with The Pittsburgh Savoyards (Phoebe in *Yeomen of the Guard* and Tessa in *The Gondoliers*), Pittsburgh Shakespeare in the Parks (Sylvia in *Two Gents*), Pittsburgh Classic Players (Viola/Cesario in *Twelfth Night*), Steel City Shakespeare (Amiens/William in *As You Like It*), and The Summer Company (Veronica Sawyer in *Heathers the Musical*). When she is not onstage, Christine works as a personal trainer and sports performance specialist and coaches for Hampton High School Girls Lacrosse.



Kelsey Robinson (GUIDERIUS / FIRST LORD) is a Brooklyn-born, rustbelt-reared performance artist. Since her 2017 Pittsburgh return, she has joined Bricolage in immersives (*DODO, the forest of everywhere, the clearing*) and *Wordplay*. She is an actor and teaching artist with Quantum. Kelsey has worked with local companies including Attack, City Theater, PICT, Pittsburgh CLO and is a founding FolkLab member. She has received support from Kelly Strayhorn Theater, the Opportunity Fund, Pittsburgh Cultural Trust and Greater Pittsburgh Arts Council. Mention-worthy venues include: The Carnegie Museum of Art, Pittsburgh Center for the Arts, City of Asylum, The Mattress Factory, The Warhol and National Aviary. And NYC's Carnegie Hall, The Studio Museum, The National Museum of Jazz in Harlem, MOMA and The Shed. She's honored to make her Shakespeare debut in this ambitious project!



Ronald H. Siebert (CYMBELINE / JUPITER) has worked in more than 60 theatres across America, from Broadway to Boca Raton, from Sarasota to Sacramento. In addition he has appeared on most daytime dramas broadcast from New York City, including *Ryans' Hope*, *Guiding Light*, *As the World Turns*, *Another World*, *Loving*, and *All My Children*. On PBS, he co-starred in *The Ghost of H.L. Mencken* and played the younger Charles Francis Adams in *The Adams' Chronicles*. Ron has appeared in 15 productions of Shakespeare's plays and happily played King Lear and Friar Laurence in *Romeo and Juliet* for Shakespeare In the Parks. Thanks to Jennifer Tober and Jeffrey Chips for this opportunity.



Jennifer Tober (IMOGEN / PSIP Founder and Artistic Director) is the Founding Artistic Director of Pittsburgh Shakespeare in the Parks and has overseen the company's growth since 2005 as well as producing and directing. Under her leadership, PSIP has expanded annually in terms of funding and Board growth, and has established partnerships with organizations such as the Pittsburgh Cultural Trust, University of Pittsburgh Honors Program, CMU, Weinberg Terrace, Franktuary, and others. Ms. Tober is a professional actress, director and teacher who has made Pittsburgh her home since 2005. In Pittsburgh, Ms. Tober has performed in *Rope* and *The Queens* (Playhouse REP); *The Pillowman*, *Salome* (Pittsburgh Irish and Classical Theatre), *The Red Shoes* and *Dream of Autumn* (Quantum Theatre), *Macbeth 3* (UnSeam'd Shakespeare), *In the Voodoo Parlour of Marie Laveau* (Pittsburgh Playwrights); poetry and staged readings with Poets' Corner, Pittsburgh Irish and Classical Theatre, and the Steinway Piano Series. Regional/New York theatre includes *Macbeth*, *Comedy of Errors*, *Two Gentlemen of Verona*, *A Midsummer Night's Dream*, *As You Like It* and *Love's Labour's Lost* (Hudson Valley Shakespeare Festival); *As You Like It* (NY Classical Theatre), *Winter's Tale*, *A Midsummer Night's Dream* (The Shakespeare Project and for whom she has directed *A Midsummer Night's Dream* and *As You Like It* as well as the 2006 Bard Walk, and has produced the company's productions since founding it in 2005.); *The Christmas Cup* (Mill Mountain Playhouse); *Richard II*, *Midsummer*, and *Julius Caesar* (A Crew of Patches, NY - a company of which Ms. Tober was one of the founders); *The Fugitives* (NY Street Theatre Caravan/Marketa Kimbrell); and *"DADDY CRUSH"* (her award-winning one-woman show at the Belt Theater in NY). While in New York, Ms. Tober also started the organization "Shakespeare Inside," which taught Shakespeare, acting, writing to convicted Bronx juveniles. Film and TV includes *Sex & the City*, *Rescue Me*, *Ed*, *SNL*, commercials/voiceovers and the local Pittsburgh film Progression. Ms. Tober holds a BA from Temple University and an MFA from West Virginia University and is a member of the Actors' Equity Association, Screen Actors' Guild, and American Federation of TV and Radio Artists. A vibrant member of the Pittsburgh arts community, Ms. Tober also teaches at Duquesne University, coaches Shakespeare for the Public Theatre's annual Shakespeare monologue contest, and is a certified Yoga instructor. Ms. Tober believes fervently in the necessity of free, excellent Art in our communities and strives to create the opportunity for access to theatre for all through the interactive, muscular, and fun style of Pittsburgh Shakespeare in the Parks.



Tracey D. Turner (QUEEN / BELARIUS / MOTHER LEONATUS) a Carnegie Mellon University alumna, was named Actress of the Year in 1997 by *In Pittsburgh Newsweekly* for her portrayal of Prospero in the timespace production of William Shakespeare's *The Tempest*. Other stage credits include Mrs. Prentice in *Guess Who's Coming To Dinner* for the Winnepesaukee Playhouse in Meredith, New Hampshire. Minnie Kincaid in *Lifting for Kuntu Repertory Theatre*, Stella Marr in *Racing Demon* for Pittsburgh Irish and Classical Theatre, Gertrude in *Hamlet* and Alcandre in *The Illusion* for Pittsburgh Theater Laboratory, and Peggy Clark in *Blue* and Jo Billie Massey in *Sassy Mamas* for New Horizon Theater. She appeared in *Fahrenheit 451*, *A Lesson Before Dying*, and *1984* for Prime Stage Theatre, *Ruined* and *Home* for The Entertainment Consortium, and *The Voyages of Sinbad* and *As You Like It* for The Steel City Shakespeare Center. She was the Artistic Director of I Dream A World, Inc., a non-profit educational touring company, and was Artist in Residence and Assistant Coordinator of the Friendship Academy after school program. Ms. Turner was a teaching artist at Point Park University, where she appeared in productions of *Hamlet*, *Anton in Show Business*, and *Halcyon Days*. Ms. Turner's film credits include Lionsgate's *The Last Witch Hunter* with Vin Diesel, *Wonderboys*, and *Boys on the Side*. She was host of *The 5-Star Ethnic Show* and *Shopping Pittsburgh* for Comcast Cable Channel FYI. She has appeared in numerous commercials, industrial and independent films, and billboard campaigns.

ARTISTIC & PRODUCTION TEAM



Jeffrey Chips (Director) is thrilled to return to PSIP for his fifth production and second as director. Jeffrey first worked with PSIP in the second season in 2006, playing Tom Snout in *A Midsummer Night's Dream*. He also appeared as Alonso in *The Tempest* and the Prince in *Romeo and Juliet* and served as director for King Lear. Jeffrey is the Founder and Artistic Director of Steel City Shakespeare Center, working as producer, director, writer, and performer on fourteen productions in six years. Directing credits with SCSC include *Twelfth Night*, *A Christmas Carol*, *Much Ado About Nothing*, *The Tempest*, *The Seven Voyages of Sinbad*, *Richard III*, and a recent virtual production of *As You Like It*. He holds a BA in Theater from Allegheny College and an MLitt and MFA in Shakespeare and Performance from Mary Baldwin University and trained at the American Shakespeare Center in Staunton, VA. Outside of the theater, he serves on the board of directors of the West View HUB. He owes everything to his incredible wife, Megan, and sons, Samuel, Isaac, and Joshua.

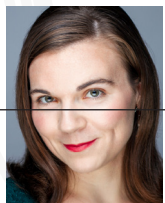


Tonya Lynn (Assistant Director/Fight Director/Puppeteer) Cymbeline marks Tonya's 16th production with Pittsburgh Shakespeare in the Parks, and her 15th season working with the company. As a fight director, her credits include the world premiere of *Storming Heaven* at West Virginia Public Theatre, the original production *Sword Play* at Colonial Williamsburg, VA, the Pittsburgh premiere of *She Kills Monsters* at the University of Pittsburgh (including a sold-out encore performance at the August Wilson Cultural Center) and over 100 productions at Pittsburgh area theaters and universities, including the Young Playwrights' Festival at City Theatre, Pittsburgh Irish and Classical Theatre, Prime Stage Theater, Poor Yorick's Players, Robert Morris University, Seton Hill University, Westminster College, and Marietta College. Tonya is a co-founder of Brawling Bard Theater (a five-time award winner at the Pittsburgh Fringe Festival), and a company member with New Renaissance Theatre Company. She has studied with the United Stuntmen's Association and for over 15 years has been an active member of the Society of American Fight Directors, with whom she is nationally recognized as a Certified Teacher of Stage Combat.

Lisa Leiberger (Production Designer) is a professional theatrical designer, puppeteer, teaching artist, and member of Local 787 Wardrobe Union. She has served as production designer for PSIP for the past seven years. Her local, recent artistic credits include: designing and building Parker the chipmunk mascot for the Allegheny Parks Service, serving as costume designer for Hiawatha Project's *My Travelling Song*, and designing the set for Dreams of Hope's *Chasing Elevation*. Outside of Pittsburgh, some of her notable credits include, designing and building Weber State University's touring production *Peter Rabbit*, designing and creating the original mascot for the NFL's Carolina Panthers, and serving as resident costume designer and costume shop manager for the Children's Theatre of Charlotte. Lisa is also the manager of School and Community Programs for the Education Department of the Pittsburgh Cultural Trust. She holds a BFA in Puppetry/Children's Theatre from West Virginia University, an MA in Theatre for Youth from the University of Wisconsin-Madison, and an MA in Theatre from the University of Pittsburgh.



Alan Irvine (Production Manager) directed Henry V for PSIP in 2017 and The Tempest in 2008. He is the host for PSIP's Bring Your Own Bard monthly reading series. Alan is also the co-founder of Brawling Bard Theater, which won the "Audience Choice" award at the 2019 Pittsburgh Fringe for "King John: Abridged." Alan is also a professional storyteller and serves as PSIP's resident storyteller, regularly performing short, comic tales based on each season's play before select shows.



Emily Gallagher (Stage Manager / Dance Captain) holds stage management credits with Carnegie Mellon University and Pittsburgh Festival Opera, and is excited to be working with Pittsburgh Shakespeare in the Parks for the second time this year. When not behind the scenes, Emily has been seen in the roles Susanna in *Le nozze di Figaro* and Carolina in *Il matrimonio segreto* at Carnegie Mellon University, and as Nada in the Belgrade Tour of *Svadda*. Emily has also been a part of several new music festivals around Pittsburgh and has performed in multiple world premieres of operas. She is a recent graduate of Carnegie Mellon University and holds a BFA in Vocal Performance.

PSiP
Pittsburgh
Shakespeare
in the Parks

WEEK OF
WILL

Celebrate Shakespeare's 457th Birthday
with us on April 23, 2021!

"Not of an age, but for all time..."

—Ben Jonson

COMMUNICATIONS

Marketing and Public Relations
Graphic Designer
Webmaster
Production Photographer
Videographer
Family and Children's Guide

New Place Collaborations
Sara-Anne Lee
Steven Doerfler
Catherine Aceto
Ryan Bergman
Catherine Aceto

THANK YOU

Thank you for supporting Pittsburgh Shakespeare in the Parks, offering FREE performances of Shakespeare within the city limits and beyond!

FOUNDATION SUPPORT

The Fine Foundation
PNC Charitable Trust
PA Partners (Greater Pittsburgh Arts Council)
New Sun Rising

MEDIA SPONSORS

WYEP/WESA
Print

SEASON SPONSOR

Pip & Lola's Everything Homemade

PSiP
Pittsburgh
Shakespeare
in the Parks

SPECIAL THANKS

We are grateful to all of the households and families of our company members for support during our live productions and rehearsals from their homes.

Adam Rutledge
Anna Singer, Classical WQED 89.3
Allegheny County Parks
Brawling Bard Theatre
Brittsburgh
Fluidity Theatre
Franktuary
Mad Mex/Big Burrito
Mrs Shakespeare/Yvonne Hudson
Pip & Lola's Everything Homemade
Pittsburgh Irish and Classical Theatre
Pittsburgh Parks Conservancy
Pittsburgh Playwrights
The Pittsburgh Public Theatre
Print
Quantum Theatre
Steel City Shakespeare
Stoney Richards, Y108
Té Café
WYEP/WESA

IN KIND CONTRIBUTORS

Coffee Tree Roasters

INDIVIDUAL DONORS 2019 AND 2020

Catherine Welsh Aceto
Emily Askin
Lynette Asson & Yvonne Hudson
Jennifer Bigelow
Jennifer Briggs
Jessica Boothe
Kate Borger
Robert Charlesworth
David Chudnow
Leslie Clark
Susan & William Cohen
Sandra & Berthony Deslouches
Anita Driscoll
Annmarie Duggan & Kristina Kloss
Barbara Feige
Marian Finegold
Elinor Fisher
Miguel Feitosa
Luray Fladd
Erica Fricke
Deanne & Raymond George
Stephen Graf

Cindy Graves
W. Penn Hackney
Jennifer Frances Hempen
Rita Hostetter
Alan Irvine
Marcela and Dale King
Stacey Kish
Laurie Klatscher
Charles Kollar
Hazel Carr Leroy
Cheryl & David Longstreet
Tonya Lynn
Eric Marchbein
David Maxwell
Sarah McKay
Christopher McMullen
Barbara McNulty-Love
Helen M. Meade
Gregory Mizera
Gail Mull
Angela Mykita
Anne Marie Nelson
Catherine Parham

Kristina Paris
Jonathan Poli
Beryl Rosenberg
Stephanie Schertz
Lyle Seaman
Melanie Shrawder & Matt Ittigson
Ronald H. Siebert
Joshua Smith
Mark Southers
Wesley Speary
Gregory Swiderski
Grace Tan
Susan Todhunter
Ann Valdes
Dan Warner
Arlene and Robert Weiner
Veronica White
John Whitefoot
Mary Wilson
Emily Winrock
Deborah Wirth
Robin Ziegler



Save The Date

GIVINGTUESDAY

December 1, 2020